

# 单向阀

## Check Valves

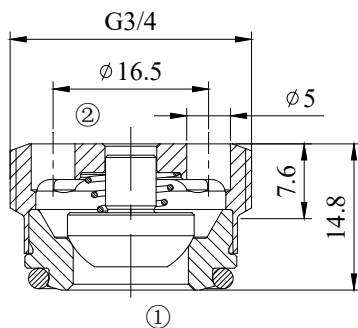
CVD0G-34 系列  
VH057 插孔—350bar  
CVD0G-34 Valve Series  
VH057 Cartridge — 350 bar



原理图 Symbol



尺寸图 Dimensions



描述 Description

一种插装式、直接作用、提升型直列式止回阀。主要用途是阻塞或负载保持装置。该阀允许流通过端口 1 至 2；插装阀具有全导向阀芯，偏置弹簧是关闭的，直到在端口 1 处施加足够的压力以打开到 2。油流在相反的方向上被阻挡（2 至 1）。

A screw-in, direct acting, poppet type in-line check valve. Main use is as a blocking or load-holding device. The CVD0 allows flow passage from port 1 to 2: the cartridge has a fully guided check which is spring-biased closed until sufficient pressure is applied at port 1 to open to 2. The flow is blocked in the opposite direction (2 to 1).



## 技术特性 Technical Features

所有阀门部件均由高强度钢制成。提升阀芯和阀座经过硬化和研磨，以确保低磨损并延长使用寿命。结构紧凑、体积小、采用通用标准插孔。

All valve parts are made of high strength steel. Poppet and seat are hardened and ground to guarantee low wear and to extend service life. Compact size. Industry common cavity.

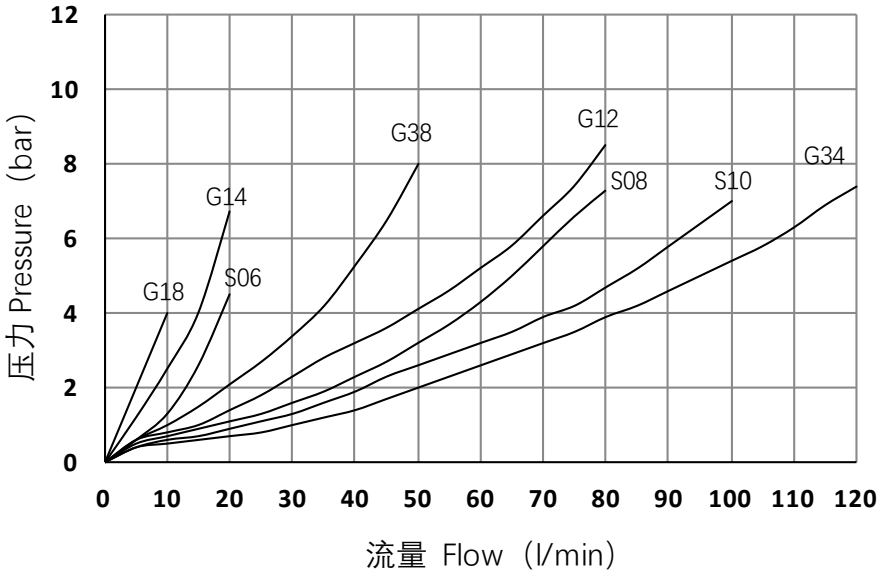


## 技术参数表 Technical Data

最大工作压力 Maximum operating pressure	350 bar
最大流量 Maximum flow	120l/min
开启压力 Cracking pressure	查看订货选型表 See table in Ordering code
最大内泄漏量 Maximum internal leakage	0,10 cm <sup>3</sup> / min @ 10 bar 0,10 cm <sup>3</sup> / min @ 350 bar
外露零件表面处理要求 External component treatment	Zn/Fe - standard Zn/Ni
安装方向 Orientation	无限制 No restrictions
安装力矩 Installation torque	50Nm
测试技术规范 Technical specification for characterization	见尾页1-2 see the last page 1-2
重量 Weight	0.04kg
适用油温范围 Oil Temperature Range	-30° C to 110° C
适用工作介质 Fluids	矿物油或具有润滑性的合成油液 Mineral - based or synthetics with lubricating properties
工作介质粘度范围 Viscosities	7,4 to 420 cSt
测试液压油型号 Oil testing condition	ISO VG 46 cSt
过滤要求 Filtration	20/18/15 ISO 4406 (maximum filtration admitted)



## 特性曲线 Performance

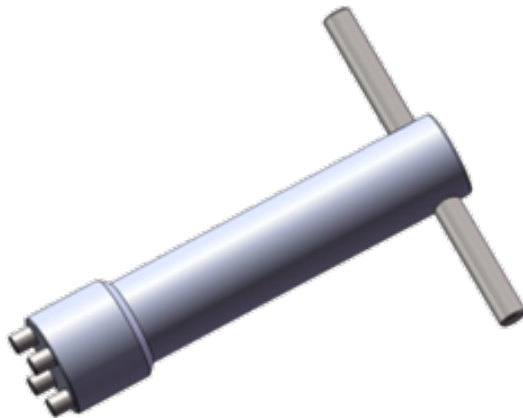


注：性能图说明了流量处理能力。P/Q 曲线是在  $T_{oil}=40^{\circ}\text{C}$  和 46 cSt 下记录。

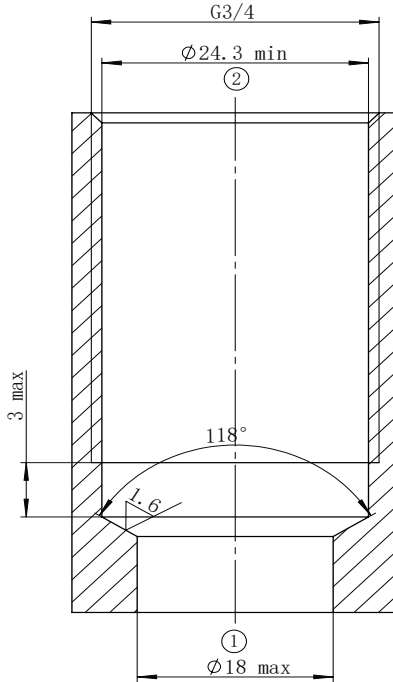
Note: The performance chart illustrates flow handling capacity. P/Q curves are recorded at  $T_{oil}=40^{\circ}\text{C}$  and 46 cSt.



## 安装工具 Installation Tool



**① 插孔图 Cavity**  
VH057



**订货编号 Ordering code**

**CVDOG - 34 - A \* - 000**

阀系列编号  
Valve basic code

插孔规格 Cavity  
VH057=G3/4 螺纹  
VH057=G3/4

标识 marking  
A=工厂常规标识, 可根据不同的客户要求  
要求进行标识  
A=standard factory marking, customized  
marking can be done upon request

000=标准配置  
000=Standard  
configuration

复位弹簧选型 spring options

弹簧型号 Spring model	开启压力 Cracking pressure
0	<0.5bar